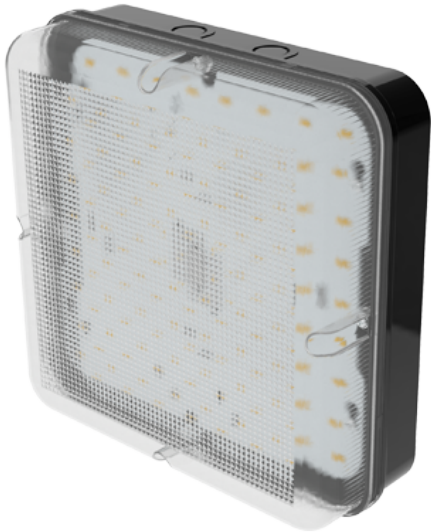


Order Code: XCBHSBOX1MS

Opal diffuser - 3000K-6000K + Wattage Selectable - Black - Microwave sensor



Features

- Suitable for exterior commercial and industrial applications
- Wattage [8W,10W,12W] adjustable via 3-way selector switch
- CCT [3000K/4000K/6000K] adjustable via 3-way selector switch

Construction

- Modular emergency and sensor pack for quick and easy conversion

Installation Notes

4-point screw fixing
Conduit side entry points for surface mount cable entry
Loop-in, loop-out push-fit terminal block for quick tool-free installation



Technical Data

General		Electrical	
Luminaire Wattage (W)	8 to 16	Rated Input Current (A)	0.04 to 0.07
Weight (kg)	0.72	Power Factor (pf)	0.83 to 0.92
Operating Temperature (ta °C)	0° to 25°	Input Voltage Range (VAC)	198 to 264
Light Output		Inrush Current Peak (A)	2.08
Lumens (lm)	1100-2000	Surge Protection (kV)	1
Efficacy (lm/W)	141	Conductor Size (mm)	0.5 to 2.5
LED		Terminal Type	4 pole piano key
CRI	80		
Macadam Elipses	1.0 to 1.6		
Driver			
Driver Current (mA)	140/215/280		
Forward Voltage (V)	48.5 to 52.5		

Order Code: XCBHSBOX1MS
Opal diffuser - 3000K-6000K + Wattage Selectable - Black - Microwave sensor

Dimensions

A (mm)	252
B (mm)	252
C (mm)	92

Line Drawing

