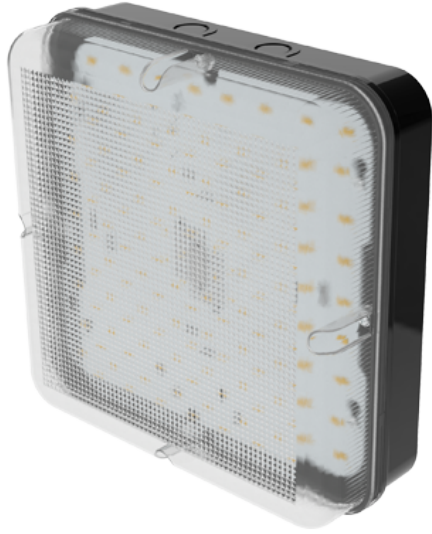


Order Code: XCBHBPX1M3

X1 Bulkhead WP - Square - Prismatic diffuser - CCT [3000K/4000K/6000K] + Wattage Selectable - Black - Emergency



Features

- Suitable for exterior commercial and industrial applications
- CCT selectable via selector switch [3000K/4000K/6000K]
- Wattage selectable via selector switch [8W/12W/16W]

Construction

- Modular [emergency](#) and [microwave sensor](#)'s available for quick and easy conversion of a standard fitting
- For additional control, please use [X1 Bulkhead Remote](#) [Sold Separately]

Installation Notes

4-point screw fixing
 Conduit side entry points for surface mount cable entry
 Loop-in, loop-out push-fit terminal block for quick tool-free instalation



Technical Data

General

Luminaire Wattage (W)	8W/12W/16W
Weight (kg)	0.83
Operating Temperature (ta °C)	5° to 25°

Light Output

Lumens (lm)	1200 to 2000
Efficacy (lm/W)	153

LED

CCT (K)	3000K/4000K/6000K
CRI	80
Macadam Elipses	0.4 to 0.8

Driver

Driver Current (mA)	140/215/280
Forward Voltage (V)	48.5 to 52.5

Emergency

Emergency Lumen Operating	146
Emergency Wattage (W)	2

Electrical

Rated Input Current (A)	0.04 to 0.07
Power Factor (pf)	0.82 to 0.92
Input Voltage Range (VAC)	198 to 264
Inrush Current Peak (A)	18.4
Surge Protection (kV)	1
Conductor Size (mm)	0.5 to 2.5
Terminal Type	4 pole piano key

Order Code: XCBHBPX1M3

X1 Bulkhead WP - Square - Prismatic diffuser - CCT [3000K/4000K/6000K] + Wattage Selectable - Black - Emergency

Dimensions

A (mm)	252
B (mm)	252
C (mm)	92

Line Drawing

