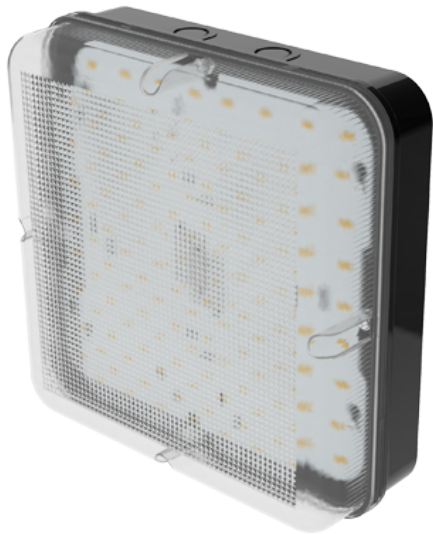


Order Code: XCBHSBPX1MS

Prismatic diffuser - 3000K-6000K + Wattage Selectable - Black - Microwave sensor



Features

- Suitable for exterior commercial and industrial applications
- Wattage [8W,10W,12W] adjustable via 3-way selector switch
- CCT [3000K/4000K/6000K] adjustable via 3-way selector switch

Construction

- Modular emergency and sensor pack for quick and easy conversion

Installation Notes

4-point screw fixing
Conduit side entry points for surface mount cable entry
Loop-in, loop-out push-fit terminal block for quick tool-free installation



Technical Data

General

| | |
|-------------------------------|-----------|
| Luminaire Wattage (W) | 8 to 16 |
| Weight (kg) | 0.72 |
| Operating Temperature (ta °C) | 0° to 25° |

Light Output

| | |
|-----------------|-----------|
| Lumens (lm) | 1200-2000 |
| Efficacy (lm/W) | 153 |

LED

| | |
|-----------------|------------|
| CRI | 80 |
| Macadam Elipses | 0.4 to 0.8 |

Driver

| | |
|---------------------|--------------|
| Driver Current (mA) | 140/215/280 |
| Forward Voltage (V) | 48.5 to 52.5 |

Electrical

| | |
|---------------------------|------------------|
| Rated Input Current (A) | 0.04 to 0.07 |
| Power Factor (pf) | 0.82 to 0.92 |
| Input Voltage Range (VAC) | 198 to 264 |
| Inrush Current Peak (A) | 2.08 |
| Surge Protection (kV) | 1 |
| Conductor Size (mm) | 0.5 to 2.5 |
| Terminal Type | 4 pole piano key |

Order Code: XCBHSBPX1MS
Prismatic diffuser - 3000K-6000K + Wattage Selectable - Black - Microwave sensor

Dimensions

| | |
|--------|-----|
| A (mm) | 252 |
| B (mm) | 252 |
| C (mm) | 92 |

Line Drawing

