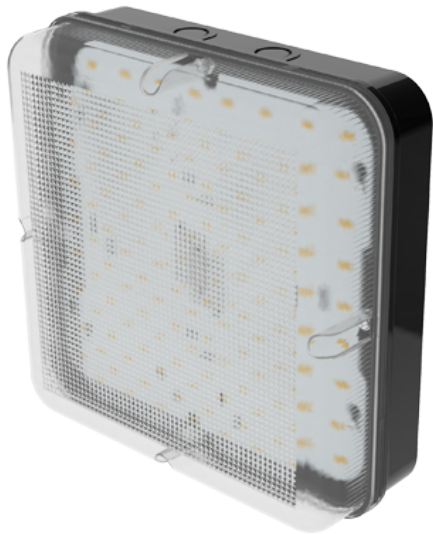


Order Code: XCBHSWPX1MS

Prismatic diffuser - 3000K-6000K + Wattage Selectable - White - Microwave sensor



Features

- Suitable for exterior commercial and industrial applications
- Wattage [8W,10W,12W] adjustable via 3-way selector switch
- CCT [3000K/4000K/6000K] adjustable via 3-way selector switch

Construction

- Modular emergency and sensor pack for quick and easy conversion

Installation Notes

4-point screw fixing
Conduit side entry points for surface mount cable entry
Loop-in, loop-out push-fit terminal block for quick tool-free installation



Technical Data

General

Luminaire Wattage (W)	8 to 16
Weight (kg)	0.72
Operating Temperature (ta °C)	0° to 25°

Light Output

Lumens (lm)	1200-2000
Efficacy (lm/W)	153

LED

CRI	80
Macadam Elipses	0.4 to 0.8

Driver

Driver Current (mA)	140/215/280
Forward Voltage (V)	48.5 to 52.5

Electrical

Rated Input Current (A)	0.04 to 0.07
Power Factor (pf)	0.82 to 0.92
Input Voltage Range (VAC)	198 to 264
Inrush Current Peak (A)	2.08
Surge Protection (kV)	1
Conductor Size (mm)	0.5 to 2.5
Terminal Type	4 pole piano key

Order Code: XCBHSWPX1MS

Prismatic diffuser - 3000K-6000K + Wattage Selectable - White - Microwave sensor

Dimensions

A (mm)	252
B (mm)	252
C (mm)	92

Line Drawing

