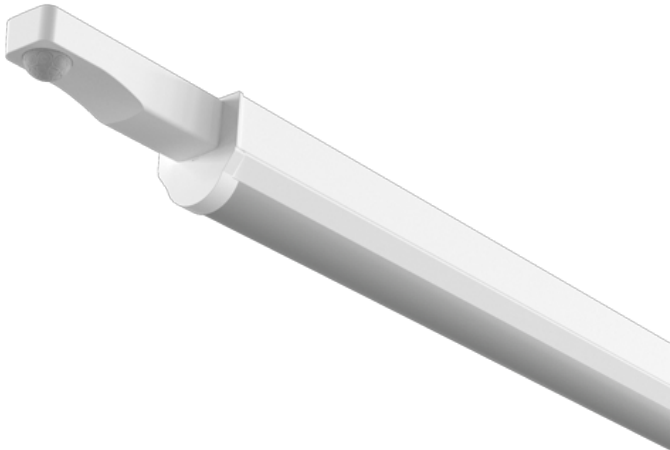


Order Code: XCBT2X1M3P

Batten X1 - 600mm - CCT [3000K/4000K/6000K] + Wattage Selectable - Emergency - Batten fit PIR



Features

- Ideal for replacement of linear fluorescent fixtures
- Suitable for general domestic and commercial use
- CCT [3000K/4000K/6000K] adjustable via 3-way selector switch

Construction

- Slimline steel body finished in white (RAL 9016)
- High quality opal diffuser to reduce glare
- Integral emergency option available
- Loop in/out mains connector
- Conduit and BESA fixing points for end or rear cable entry

Installation Notes

Centrally-mounted loop-in, loop-out push fit terminal block



Technical Data

General		Electrical	
Luminaire Wattage (W)	11 to 18	Rated Input Current (A)	0.09
Weight (kg)	1.28	Power Factor (pf)	0.83 to 0.92
Operating Temperature (ta °C)	45	Input Voltage Range (VAC)	220 to 240
Light Output		Inrush Current Peak (A)	175
		Surge Protection (kV)	L-N 1KV, LN-PG 2KV
		Conductor Size (mm)	0.5 to 2.5
Lumens (lm)	1300 to 2300	Terminal Type	4 pole piano key
Efficacy (lm/W)	132		
LED			
CRI	85		
Macadam Elipses	5		
Driver			
Driver Current (mA)	200 , 250 , 300 , 350		
Forward Voltage (V)	25 to 57		
Emergency			
Emergency Lumen Operating	264		
Emergency Wattage (W)	2		

Order Code: XCBT2X1M3P

Batten X1 - 600mm - CCT [3000K/4000K/6000K] + Wattage Selectable - Emergency - Batten fit PIR

Dimensions

A (mm)	841
B (mm)	55
C (mm)	58

Line Drawing

