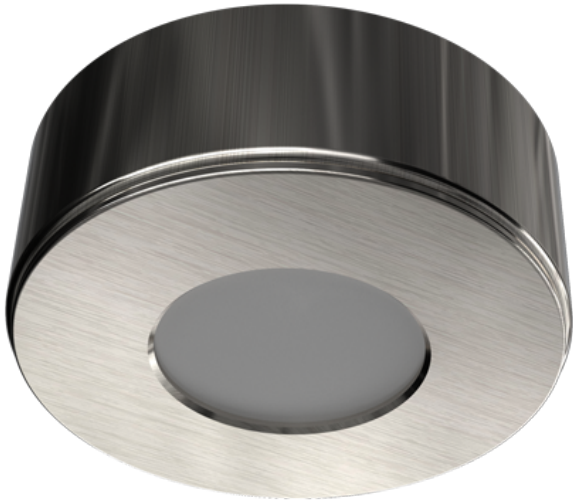


Order Code: XCCDL3CTSN
CIRCULAR CABINET LIGHT CC XCCDL - Satin Nickel - 3W - 3000K-4000K - Fixed output



Features

- Suitable for kitchen or wardrobe applications
- LED circular under cabinet downlight
- Can be surface or flush/recessed mounted
- Complete with 1.5m of mains, 2 core cable
- CCT [3000K/4000K] adjustable via 2-way selector switch

Construction

- Pressed steel body
- Frosted polycarbonate diffuser
- Integral driver circuitry with mains input

Technical Data

General		Electrical	
Luminaire Wattage (W)	3	Rated Input Current (A)	0.03
Weight (kg)	0.17	Power Factor (pf)	0.42
Operating Temperature (ta °C)	-20 to 50	Input Voltage Range (VAC)	220-240
Light Output		Inrush Current Peak (A)	110
Lumens (lm)	240	Surge Protection (kV)	0.5kV
Efficacy (lm/W)	80	Conductor Size (mm)	0.5
LED		Terminal Type	2 core flex
CCT (K)	3000K/4000K		
CRI	80		
Macadam Ellipses	<5		
Driver			
Driver Current (mA)	120		
Forward Voltage (V)	18		

Order Code: XCCDL3CTSN
CIRCULAR CABINET LIGHT CC XCCDL - Satin Nickel - 3W - 3000K-4000K - Fixed output

Dimensions

C (mm)	27
Fix	48
Dia. (mm)	73

Line Drawing

