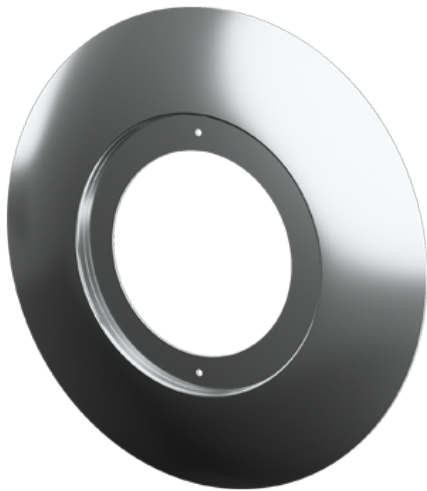


Order Code: XCFRX1CPPC
Polished Chrome Conversion Plate for X1 FRD



Features

- 65mm - 120mm cut out
- Compatible with [X1 FRD](#)

Construction

- Pressed steel bezel

Dimensions

A (mm)	73
C (mm)	6
Dia. (mm)	170

Line Drawing

