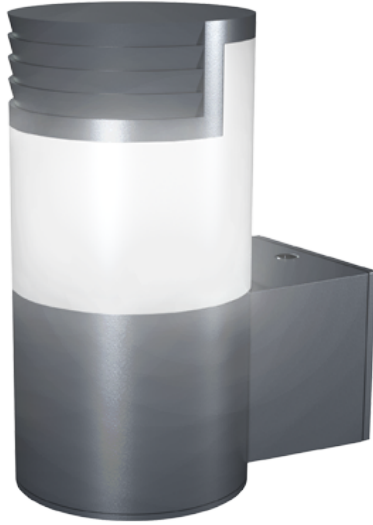


**Order Code: XCPL9WW**

9W - Porch Light LED - Fixed Output - 3000K



**Features**

- Suitable for exterior walls and entrance areas
- Low energy LED module for reduced running costs
- Up to 61 lumens per watt efficacy

**Construction**

- Die-cast aluminium body finished in Anthracite grey
- Frosted polycarbonate diffuser
- Supplied as standard with warm white [3000K] LED

**Installation Notes**

Fixed via rear wall mounting plate with cable entry and wired via 3-way termination block

**Technical Data**

General		Electrical	
Luminaire Wattage (W)	9	Rated Input Current (A)	0.04
Weight (kg)	0.70	Power Factor (pf)	0.94
Operating Temperature (ta °C)	0 to 25	Input Voltage Range (VAC)	198-264
<b>Light Output</b>		Inrush Current Peak (A)	13
Lumens (lm)	550	Surge Protection (kV)	1
Efficacy (lm/W)	61	Conductor Size (mm)	0.5-1.5
<b>LED</b>		Terminal Type	PIANO 3
CCT (K)	3000		
CRI	84		
<b>Driver</b>			
Driver Current (mA)	350		
Forward Voltage (V)	21		

**Order Code:** XCPL9WW

9W - Porch Light LED - Fixed Output - 3000K

### Dimensions

A (mm)	180
B (mm)	135
Dia. (mm)	90

### Line Drawing

