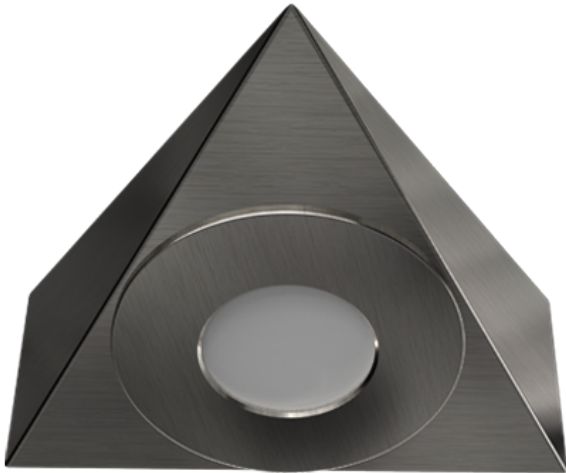


Order Code: XCTDL3CTSN
TRIANGLE CABINET LIGHT CC Cabinet/Shaver Lights 3W - 3000K-4000K



Features

- LED Triangular under cabinet downlight suitable for kitchen areas
- Surface mounted
- CCT [3000K/4000K] adjustable via 2-way selector switch
- Complete with 1.5m of mains, 2 core cable

Construction

- Pressed steel body
- Frosted polycarbonate diffuser
- Integral driver circuitry with mains input

Technical Data

General		Electrical	
Luminaire Wattage (W)	3	Rated Input Current (A)	0.03
Weight (kg)	0.19	Power Factor (pf)	0.42
Operating Temperature (ta °C)	-20 to 50	Input Voltage Range (VAC)	220-240
Light Output		Inrush Current Peak (A)	110
Lumens (lm)	240	Surge Protection (kV)	0.5kV
Efficacy (lm/W)	80	Conductor Size (mm)	0.5
LED		Terminal Type	2 core flex
CCT (K)	3000K/4000K		
CRI	80		
Macadam Ellipses	<5		
Driver			
Driver Current (mA)	120		
Forward Voltage (V)	18		

Order Code: XCTDL3CTSN
TRIANGLE CABINET LIGHT CC Cabinet/Shaver Lights 3W - 3000K-4000K

Dimensions

A (mm)	117
B (mm)	123
C (mm)	45

Line Drawing

