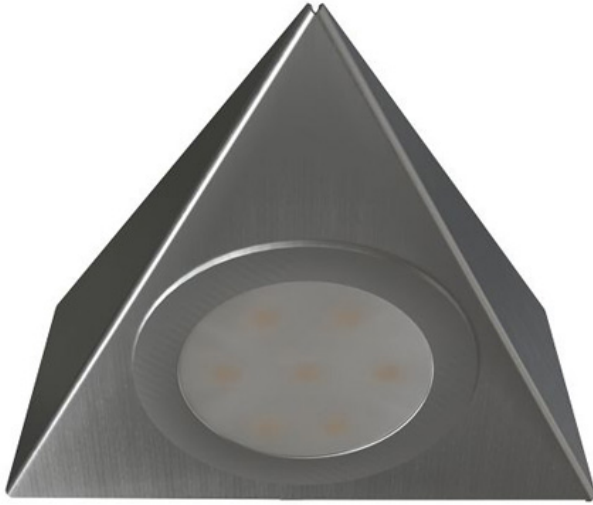


Order Code: XCTDL3NWSN

3W - Triangular Cabinet Light - IP20 - 4000K - Satin Nickel



Features

- LED Triangular under cabinet downlight suitable for kitchen areas
- Surface mounted
- Complete with 0.5m of mains, 2 core cable

Construction

- Pressed steel body
- Frosted polycarbonate diffuser
- Integral driver circuitry with mains input
- Available in warm white [3000K] or neutral white [4000K]



Technical Data

| General | | Electrical | |
|-------------------------------|---------|---------------------------|-----------|
| Luminaire Wattage (W) | 3 | Rated Input Current (A) | 0.011 |
| Weight (kg) | 0.19 | Power Factor (pf) | 0.4 |
| Operating Temperature (ta °C) | 0 to 25 | Input Voltage Range (VAC) | 220-240 |
| Light Output | | Surge Protection (kV) | 2 |
| Lumens (lm) | 200 | Conductor Size (mm) | 0.5 |
| Efficacy (lm/W) | 67 | Terminal Type | Bare wire |
| LED | | | |
| CCT (K) | 4000 | | |
| CRI | 80 | | |
| Macadam Ellipses | 3 | | |

Order Code: XCTDL3NWSN

3W - Triangular Cabinet Light - IP20 - 4000K - Satin Nickel

Dimensions

| | |
|--------|-----|
| A (mm) | 124 |
| B (mm) | 124 |
| C (mm) | 40 |

Line Drawing

