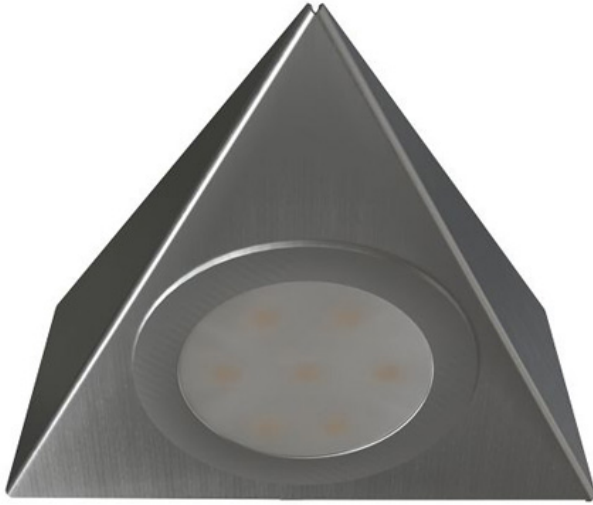


Order Code: XCTDL3WWSN

3W - Triangular Cabinet Light - IP20 - 3000K - Satin Nickel



Features

- LED Triangular under cabinet downlight suitable for kitchen areas
- Surface mounted
- Complete with 0.5m of mains, 2 core cable

Construction

- Pressed steel body
- Frosted polycarbonate diffuser
- Integral driver circuitry with mains input
- Available in warm white [3000K] or neutral white [4000K]



Technical Data

General		Electrical	
Luminaire Wattage (W)	3	Rated Input Current (A)	0.011
Weight (kg)	0.19	Power Factor (pf)	0.4
Operating Temperature (ta °C)	0 to 25	Input Voltage Range (VAC)	220-240
Light Output		Surge Protection (kV)	2
Lumens (lm)	200	Conductor Size (mm)	0.5
Efficacy (lm/W)	67	Terminal Type	Bare wire
LED			
CCT (K)	3000		
CRI	80		
Macadam Ellipses	3		

Order Code: XCTDL3WWSN

3W - Triangular Cabinet Light - IP20 - 3000K - Satin Nickel

Dimensions

A (mm)	124
B (mm)	124
C (mm)	40

Line Drawing

